

Super Shelf The Powerful Last Mile Access Solution



Morph and harmonize your network

Descriptions

Carriers worldwide are in a race to meet the growing needs of end-users. This means providing news services while maximizing the use of existing or new network equipment and facilities. Users require the provisioning of subrate (up to 19.2 Kbps), narrowband (up to 128 Kbps) and wideband (up to 2.048 Mbps) services. Recognizing this need for service-provisioning products for the copper loop plant, Tainet has developed the SUPER SHELF, a fully network-managed system that supports multi-service transmission products in a common 19", central office-based shelf.

The TRS-32 SUPER SHELF accommodates various combinations of any 16 Tainet xDSL series, baseband, or analog modem cards. The different modems supported include the E1 HDSL, N x 64 Kbps MSDSL, 64 / 128 Kbps NTU baseband, as well as analog modems. All cards in the SUPER SHELF have remote control capabilities for monitoring and controlling remote stand-alone units. The CSR controller, mounted in SUPER SHELF, provides the capability for system operator with the additional capability of controlling the inserted cards from the front panel via an LCD display and operation key.

Comprehensive SNMP management capabilities and other advanced features make the SUPER SHELF a value-adding necessity. The Tainet Manager management system runs on Windows platform to enable easy integration with backbone management. Hot swapping of cards provides easy maintenance and ensures system uptime. System operators can replace any on-line modem card without affecting the operation of other modem cards. The CSR controller will auto reload the profile setting to the new inserted modem card. Carriers worldwide can now meet the growing needs of end-users with the SUPER SHELF.

Features

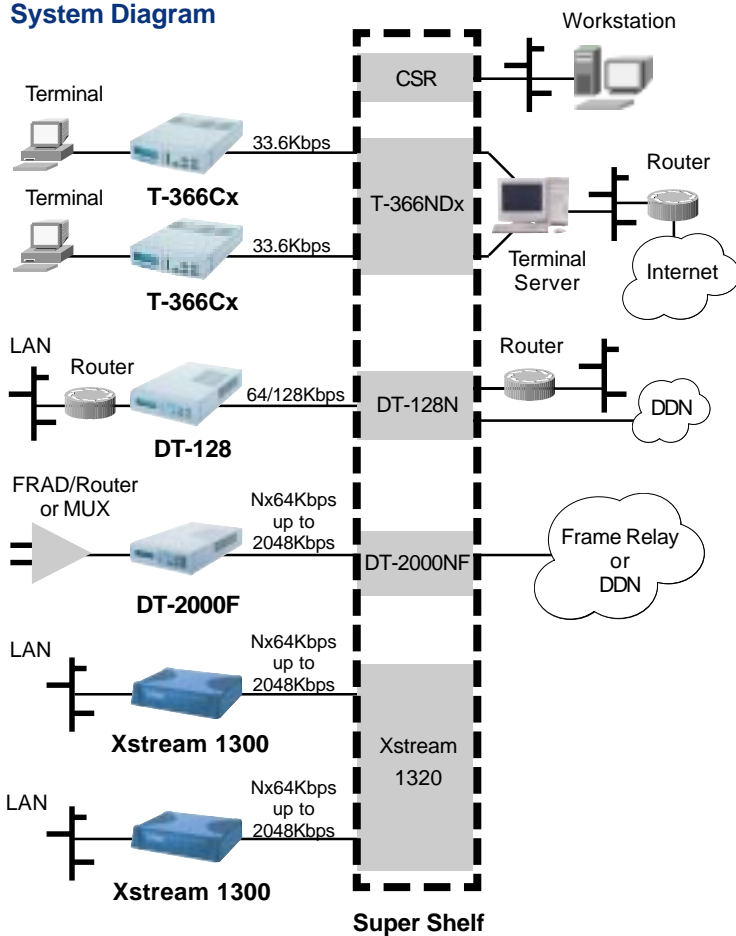
- Accommodates any combination of 16 HDSL, MDSL, NTU and analog modem cards
- SNMP management enables easy integration with backbone
- Hot swapping of cards and power supplies
- Front panel control and remote control for all modem card and stand alone units
- Optional dual power supplies with full redundancy, AC or DC



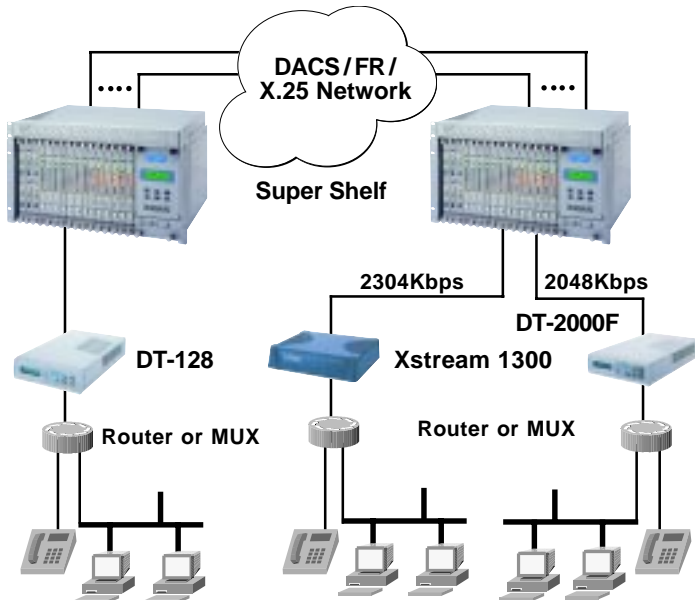
Super Shelf The Powerful Last Mile Access Solution

Application Diagram

System Diagram



Backbone data distribution up to the customer premises



Technical Specifications

Connectors

- 4 50-pin Centronic Connectors

Power Requirements

- AC: 90 ~ 260 V, 47 ~ 63 Hz
- DC: -36 ~ -72 V, 47 ~ 63 Hz
- Power Consumption: 180 W per rack chassis

Dimensions and Weight

- 480 W x 220 H x 380 D mm, 0.6 Kg

Operating Environment

- Operating temperature: 0 °C ~ 50 °C
- Storage temperature: -25 °C ~ 70 °C
- Relative humidity: Up to 95% (non-condensing)

Ordering Info

Basic Unit	Description
TRS-32/@/%/^(Shelf for T-336NDx; 19" Rack Mounted chassis with 50-pin Centronic connector with Cooling Fan.
(@) Controller Module	
/NMC-32	Shelf Controller with LCD and Key Pads
/NMC9000	Shelf Controller with CS function ; w/ LCD and Key pads
/PW-180A	180W, 90~260VAC, AC Power Module
/PW-180D	180W, -48VDC, DC power module
	If you need redundant capability for power supply, you have to order 2 pcs of PW-180A or PW-180D
(^)Panel Module (optional)	
/TB-32	Optional real panel: Daughter Board for dial line & 2-wire connection
/CA-50	Optional 50 pin cable (3.5m) for 50 pin Centronic connector (4 pcs)
ITU Modem Card -- Sync: 1.2 ~ 33.6 Kbps; Async: 0.075 ~ 115.2 Kbps; 2/4 wires	
T-336NDx	Rack-Mounted modem Card of T-336Cx; Dual ports per card
IDSL Card -- Sync: 2.4 ~ 128 Kbps; Async: 0.3 ~ 38.4 Kbps; 2/4 wires	
DT-128N/*	DT-128 rack card, without DTE I/F module
(*) DTE I/F Module	
/R232-1	RS-232D; Female
/R530-1	RS-530; Female
/V35-1C	V.35; Female w/ adaptor cable (V.35 -V.24 cable)
/X21-1	X.21; Female w/ adaptor cable
/G703B-1	G.703 Balance, 64K/128K w/ adaptor cable
HDSL Card -- Sync: N x 64 Kbps up to 2 Mbps;	
DT-2000NF1/**	Full & Fractional E1 HDSL rack card for Super Shelf (TRS-32), with G.703 Balanced & Unbalanced DTE I/F; The other DTE I/F is option
DT-2000NF2/**	Full & Fractional E1 HDSL rack card with remote power feeding for Super Shelf (TRS-32), with G.703 Balanced & Unbalanced DTE I/F; The other DTE I/F is option
(**) DTE I/F Module	
/R530-1	RS-530; Female
/V35-1C	V.35; Female w/ adaptor cable (V.35 -V.24 cable)
/V36-1	V.36; Female w/ adaptor cable
/X21-1	X.21; Female w/ adaptor cable
MSDSL Card -- Sync: N x 64 Kbps up to 2.3 Mbps; 2W with CAP technology	
1320/**	MSDSL rack card, 2-channel per card, without DTE I/F module; up to 2.3Mbps;
(***) DTE I/F Module	
/V35-2	Dual V.35 I/F; Female w/ adaptor cable
/R530-2	Dual RS-530 I/F; Female
/V36-2	Dual V.36 I/F; Female w/ adaptor cable
/X21-2	Dual X.21 I/F; Female w/ adaptor cable
/G703-2	Dual G.703 I/F; Balance & Un balance



The Professional Partner

TAINET COMMUNICATION SYSTEM CORP.

Headquarters

No. 25, Alley 15, Lane 120, Sec. 1. Nei-Hu Rd, 114 Taipei, Taiwan

TEL: 886-2-2658-3000

FAX: 886-2-2658-3232

http://www.tainet.net

* Specifications subject to change without notice.